

Ideal for all
laying patterns
and tile sizes

SOLIDOR STRUCTUSOL
ALUMINIUM SUPPORT SYSTEM

INNOVATION, POWER AND STABILITY IN 1 SYSTEM

SOLIDOR 

THE ADVANTAGES OF STRUCTUSOL

- Increased stability
- Multiple uses
- Ultra-thin profile
- Easy to install
- Handy levelling
- Consistent joint width
- No tread noises
- Optimised grip
- Simple to extend
- Easy to reuse
- Fully recyclable

SOLIDOR

SMALL MEANS BIG

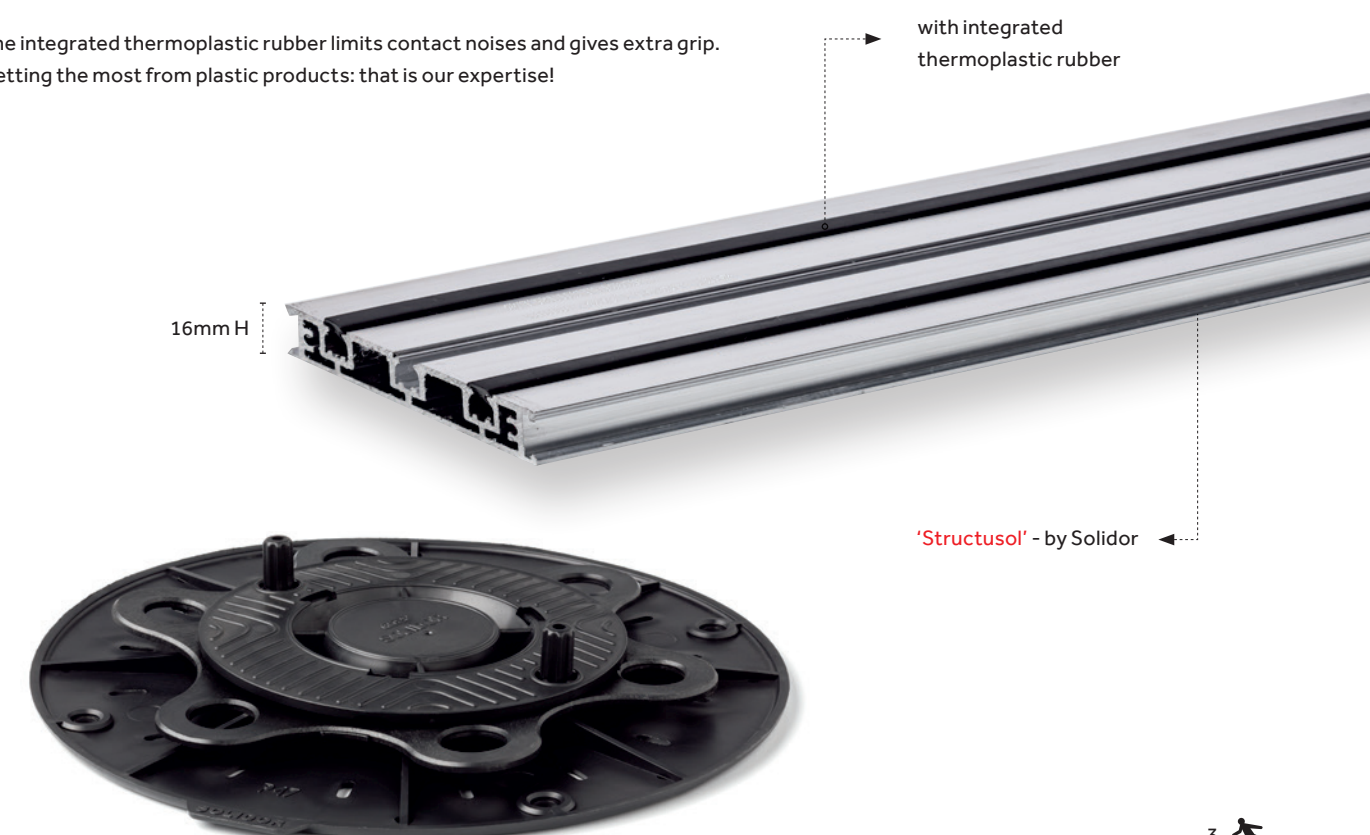
Laying high-quality decking quickly and efficiently? Solidor is there to help. After our incredibly low deck supports, we have now developed a modular support system with an unprecedentedly ultra-thin aluminium profile. Because every millimetre counts!

Experience the user-friendliness of Structusol:

- No limits in terms of tile size or laying patterns.
- Simple to use in both new buildings and renovation projects.
- Compensates for slopes and unevenness.
- Quick and hassle-free installation.

You already are familiar with the strength of our Solidor deck supports. Now we have added this innovative aluminium support system. The result? An incredibly stable underlay. Use the different connectors for simple installation and the handy joint pieces for better water management. Stability is ensured by the use of blind rivets.

The integrated thermoplastic rubber limits contact noises and gives extra grip. Getting the most from plastic products: that is our expertise!





UNPRECEDENTED STRENGTH

THE NEW BENCHMARK IN LAYING DECKING

As an innovative market leader, Solidor continuously develops ready-to-use, high-quality solutions for decking. Structusol sets a new standard in this regard. "With this system, tiles of all sizes and all laying patterns stay on the same level", says Henri Dejangs.

SIZE DOES MATTER

16 millimetres: that's all the space Structusol needs. The ultra-thin support structure is especially useful for renovations, where every millimetre counts. The thinner the structure, the greater the options for decking. "Structusol can handle big tiles with ease, it's incredibly durable and even reusable", asserts Dejangs.

SUPERB PERFORMANCE

"Just like with our deck supports, we swear by quality and stability. We have opted for aluminium support structures to create a light and strong base. With a length of 2.40 metres, they are easy to transport and can be sawn down to size. The modular system is equipped with various connectors and joint pieces. Laying tiles in different patterns, such as a stretcher bond pattern or a random pattern, is simple. The open joints, with a consistent width, mean excess water is drained quickly, so there is no risk of cracks forming in high or low temperatures."

CIRCULAR & DURABLE

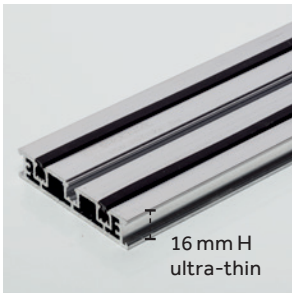
Structusol ensures a long lifetime and a durable underlay. Not only does the structure under the decking tiles last longer, but the tiles can easily be repaired or replaced and the system provides easy access for maintenance if there is a problem or leak. You can also extend the decking or take it with you if you move house!

THE ADDED VALUE OF A MARKET LEADER

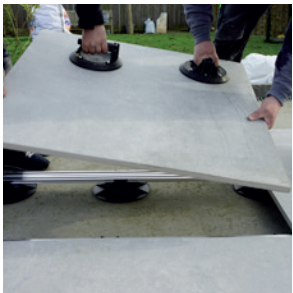
Solidor leverages its experience as a plastics manufacturer. It is nice to walk on the tiles thanks to the inlaid, thermoplastic rubber profiles. Additional advantages: they limit contact noise and hold the tiles firmly in place. The anti-slip effect provides the perfect finishing touch.

"Quick, easy installation for a stable result."

**STRUCTUSOL
SYSTEM
ACCESSORIES**



Structusol
Aluminium support structure
for deck supports with integra-
ted thermoplastic rubber



EasyLift tile lifter
Makes it easier to lift and put
down tiles

joint piece
C3L



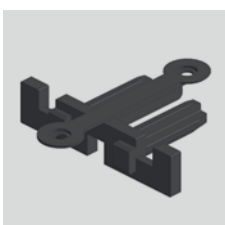
cross joint piece
(break to required size)
C3X



frontal connector
VF



lateral connector
VL



frontal wall finish
KF



lateral wall finish
KL



**QUICK
INSTALLATION
WITH
OUTSTANDING
LEVELLING**

Step 1:
Start by deciding upon the direction of the Structusol support structures, based on the laying pattern, and then install the deck supports.

Step 2:
Saw the aluminium support structures down to size, and place these on top of the deck supports using the wall and connector pieces.

Step 3:
Install the tiles and joint pieces*.
Repeat these steps.



* It is recommended to attach the joint pieces with blind rivets for optimum stability.





EXPERIENCE THE ADVANTAGES OF STRUCTUSOL



· Increased stability



· Multiple uses



· Ultra-thin profile



· Easy to install



· Handy levelling



· Consistent joint width



· No tread noises



· Optimised grip



· Simple to extend



· Easy to reuse



· Fully recyclable

SOLIDOR
INNOVATION, POWER, STABILITY

Kouterstraat 11B
B-8560 Wevelgem
+32 56 41 35 70
info@solidor.be

www.solidor.be

Albintra
WE DELIVER BUILDING EXPERTISE.

Bistweg 80
B-2520 Broechem
+32 34 70 12 12
info@albintra.be

www.albintra.be